



What does it involve to be a Tiny Forest Tree Keeper?

This document sets out what it means to get involved as a Tiny Forest Tree Keeper with Earthwatch Europe. If you're reading this because you're thinking about becoming a Tree Keeper for your local Tiny Forest thank you for your interest! Volunteering as a Tree Keeper is a great chance to get more involved in your Tiny Forest's development and track the amazing environmental impact of the site.

A Tiny Forest brings the benefits of a forest – connecting people with nature, raising awareness of the environment, helping to mitigate the impacts of climate change, and supporting urban wildlife – right into the heart of our cities and urban spaces. Find out more about the benefits of a Tiny Forest on our website.

There are a lot of different ways that Tree Keepers can get involved with their Tiny Forest. Only a few of the maintenance tasks should be considered as a key part of this role, and when these tasks are split between all the Tree Keepers, we expect each individual will only need to spend a couple of hours a month helping to care for the Tiny Forest.

A summary of the different ways that Tree Keepers can get involved:

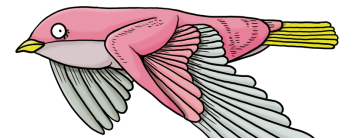
Tiny Forest maintenance –

By visiting the Tiny Forest regularly, Tree Keepers can help share photos of the forest's development, report any exciting wildlife sightings, plus keep an eye on the forest: letting us know if it is under threat from extreme weather, pests or antisocial behaviour. Also, particularly in the first couple of years, a Tiny Forest can benefit from Tree Keepers providing a helping hand with simple maintenance actions, like weeding and litter picking.

Tiny Forest community engagement –

Tiny Forests are a natural asset for all the community to access, engage with and enjoy. As a space which benefits people and wildlife, they are a fantastic outdoor venue for all kinds of activities. Tree Keepers can suggest the site as a venue to local clubs and groups, or even organise their own public events that engage people with the forest.



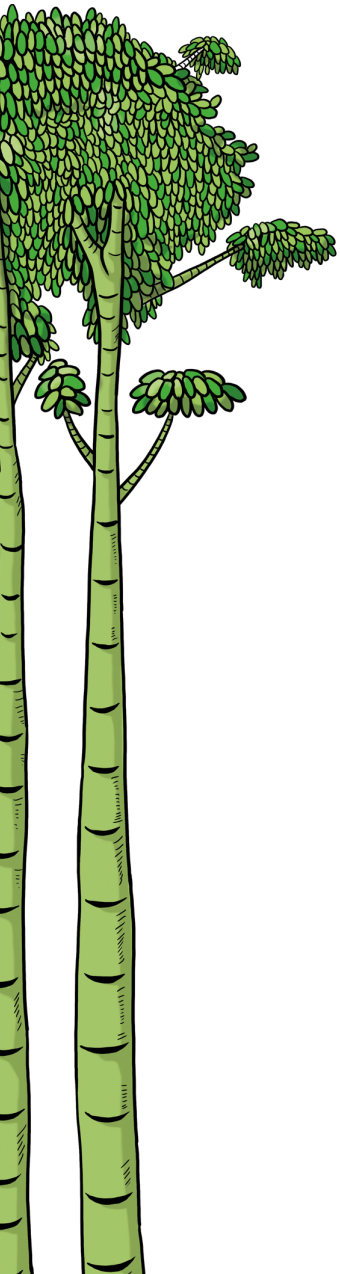


Tiny Forest science –

Research is an important aspect of the Tiny Forest project. All Tree Keepers will be invited on training to carry out simple scientific surveys of their forest, including being provided with equipment and access to the Tiny Forest Portal. The data Tree Keepers record can be used to track the impact their forest is having, as well as being analysed by our scientists to better assess the benefits these miniature urban woodlands can provide over time and between different forests.

Tree Keepers are supported in their role of caring for their local Tiny Forest in a number of ways. Through the Forest Portal, all Tree Keepers can speak to one another, sharing ideas, images or questions. The Portal is also host to a diverse set of resources, including protocols for every Tiny Forest science survey, educational resources, and templates for risk assessments and flyers. Alongside the Portal, Tree Keepers are kept in touch with our Tiny Forest scientists and the team through our seasonal newsletter and regular events, including online meet-ups and courses, plus an invite to our Tiny Forest summer party!

If you have any specific questions about the role of a Tree Keeper that aren't covered here, please send us a message using our contact form. A more detailed explanation of the role of a Tiny Forest Tree Keeper, including more information about Tiny Forest maintenance, science and community engagement can be found in the Tree Keeper Welcome Pack, which we share with Tree Keepers once they've signed on with the project.



STAY IN TOUCH



tinyforest
earthwatch
EUROPE



FACEBOOK



TWITTER



INSTAGRAM



WWW.TINYFOREST.EARTHWATCH.ORG.UK